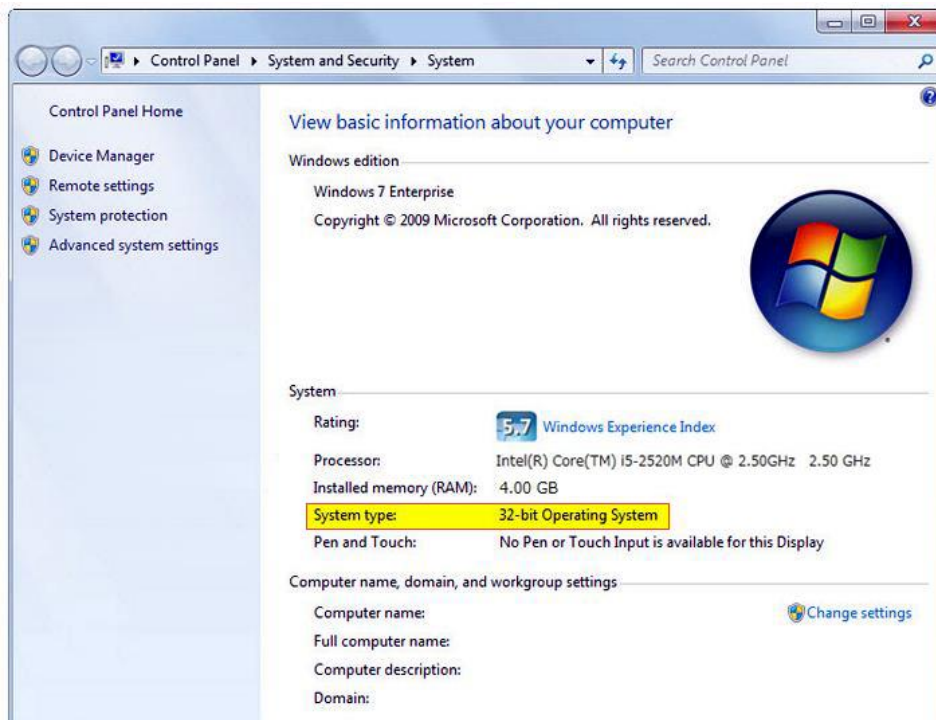


1. Installation of USB device driver on Windows 7

1.1. How to check Windows operating system type

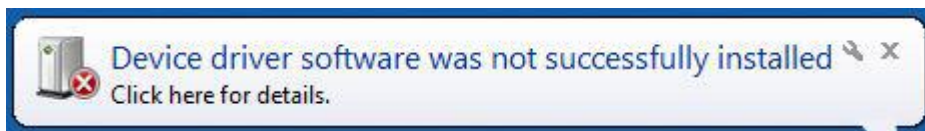
The USB device driver to be installed differs depending on the type of Windows 7 operating system – 32-bit or 64-bit. If you do not know the type of the operating system of your Windows, check it using the following procedure before installing the USB device driver.

- (1) Click the Windows Start button at the bottom of the desktop to display the Start menu. Right-click “Computer”, and then select “Properties”.
- (2) “View basic information about your computer” will open. Check “System type” under “System”.
 - “32-bit Operating System”: A driver for 32-bit is used.
 - “64-bit Operating System”: A driver for 64-bit is used.

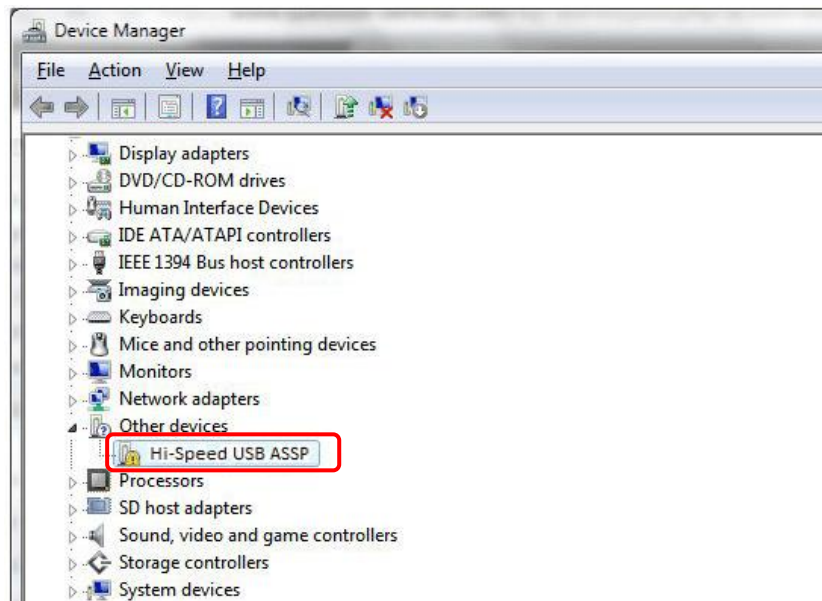


1.2. How to install USB device driver on Windows 7

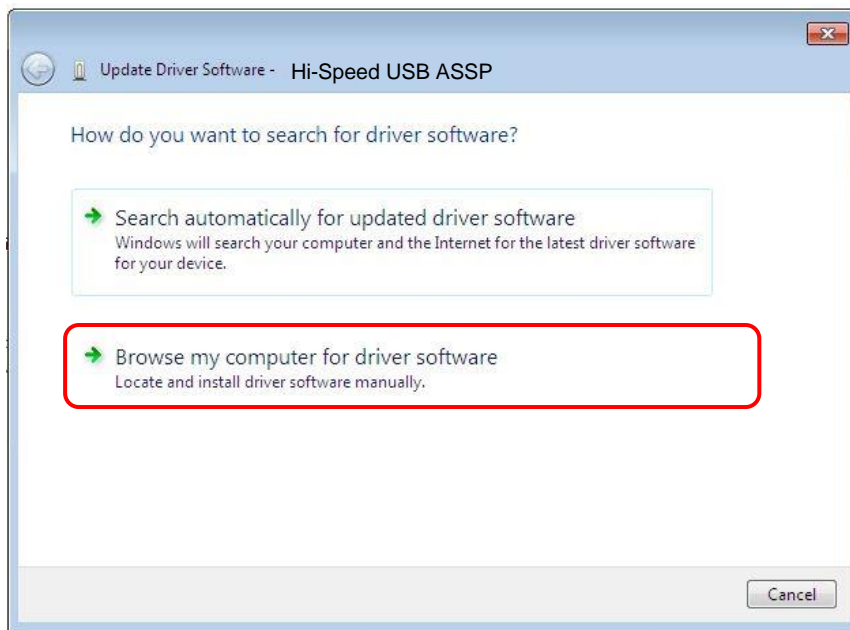
- (1) First, install the PC application (setup.exe).
When the installation is complete, the USB device drivers for 32-bit and 64-bit are copied to the following location: C:\Program Files\Flash Support Group\AF9724_AF9725 control soft\driver.
Note: The underlined section differs depending on the machine type.
- (2) Connect the programmer and PC using the USB cable.
- (3) Turn on the programmer.
- (4) The “Device driver software was not successfully installed” message is displayed at the bottom of the desktop.
(The installation needs to be performed manually, so the following message appears.)



- (5) Click the Windows Start button at the bottom of the desktop to display the Start menu. Right-click “Computer”, and then select “Properties”.
- (6) In the System area, click “Device Manager”.
- (7) “Device Manager” is displayed. Right-click on “Hi-Speed USB ASSP”, and then select “Update Driver”.



- (8) “Update Driver Software” is displayed. Click “Browse my computer for driver software”.



- (9) Specify the location to search for the driver software. The saving location of the USB device driver differs depending on the Windows operating system, 32-bit or 64-bit. Select the folder to specify in accordance with the operating system being used. Enter the folder location, and then click “Next”.

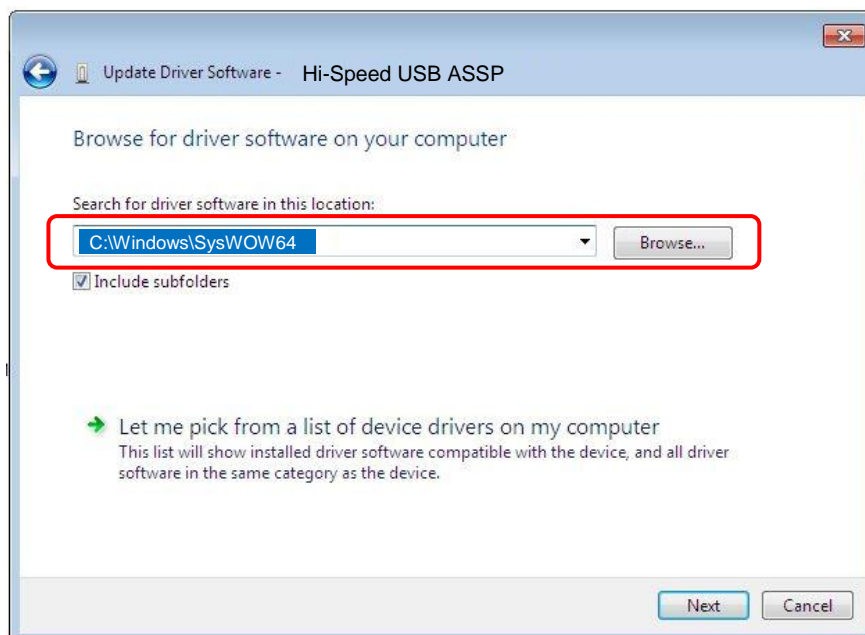
➤ **32-bit operating system**

C:\Program Files\Flash Support Group\AF9724_AF9725 control soft\driver\32bit OS

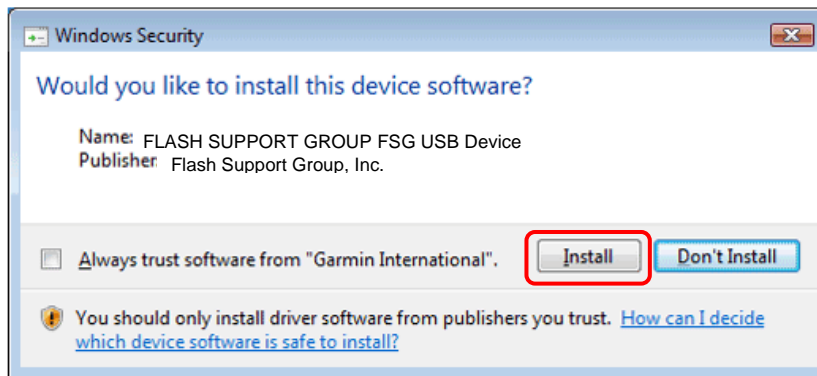
➤ **64-bit operating system**

C:\Program Files\Flash Support Group\AF9724_AF9725 control soft\driver\64bit OS

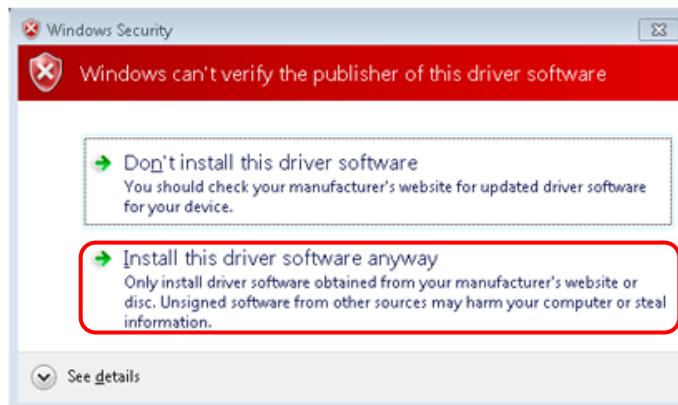
Note: The underlined section differs depending on the machine type.



- (10) The search for the driver software will start.
- (11) When the driver software is found, a confirmation window for installation appears. Click “Install”.



Note: The following window may be displayed. In this case, select “Install this driver software anyway”.



- (12) Installation of the driver software will start.

(13) Update of the driver software completes. The name of the installed driver differs depending on the Windows operating system. Check that a driver that is appropriate for your operating system is installed, and then click “Close”.

➤ **32-bit operating system**

FSGUsb.sys USB I/F

➤ **64-bit operating system**

FSGUsb64.sys USB I/F



The USB device driver has been installed.